



 paulwallace

Winnipeg Way, Turnford, EN10 6FH |
£275,000 | Leasehold

Winnipeg Way, Turnford, EN10 6FH

CHAIN FREE WITH VIEWS ACROSS ATTRACTIVE COMMUNAL GARDENS - Situated in this DESIRABLE DEVELOPMENT, this GROUND FLOOR TWO BEDROOM FLAT has been subject to extensive renovation. The property now benefits from two new bathrooms including an EN SUITE TO THE MASTER BEDROOM, a new hot water and heating system, refitted integrated kitchen. Also including a remote accessible alarm system.

Key features

- CHAIN FREE
- Two Bedrooms
- Allocated Parking
- Attractive Bathroom
- Ground Floor
- En-Suite To Master
- Superb Refitted Kitchen
- Security Entry System

Property Information

Tenure
Leasehold

Council Tax
C

EPC Rating
C

Local Authority
Broxbourne Borough Council

Lease Length
125 from 1/3/2003



 paulwallace



 paulwallace



Paul Wallace Estate Agents
Brookfield Centre
Cheshunt
Hertfordshire
EN8 0NN

 01992 781100

 cheshunt@paulwallace.co.uk

 www.paulwallace.co.uk

 Opening Times

Mon - Fri	9 am to 6:30 pm
Sat	9 am to 5:30 pm
Sun	Closed
Bank Hols	Closed

 paulwallace
estate agents

Cheshunts leading estate agent.
Please get in touch for your free
property valuation.

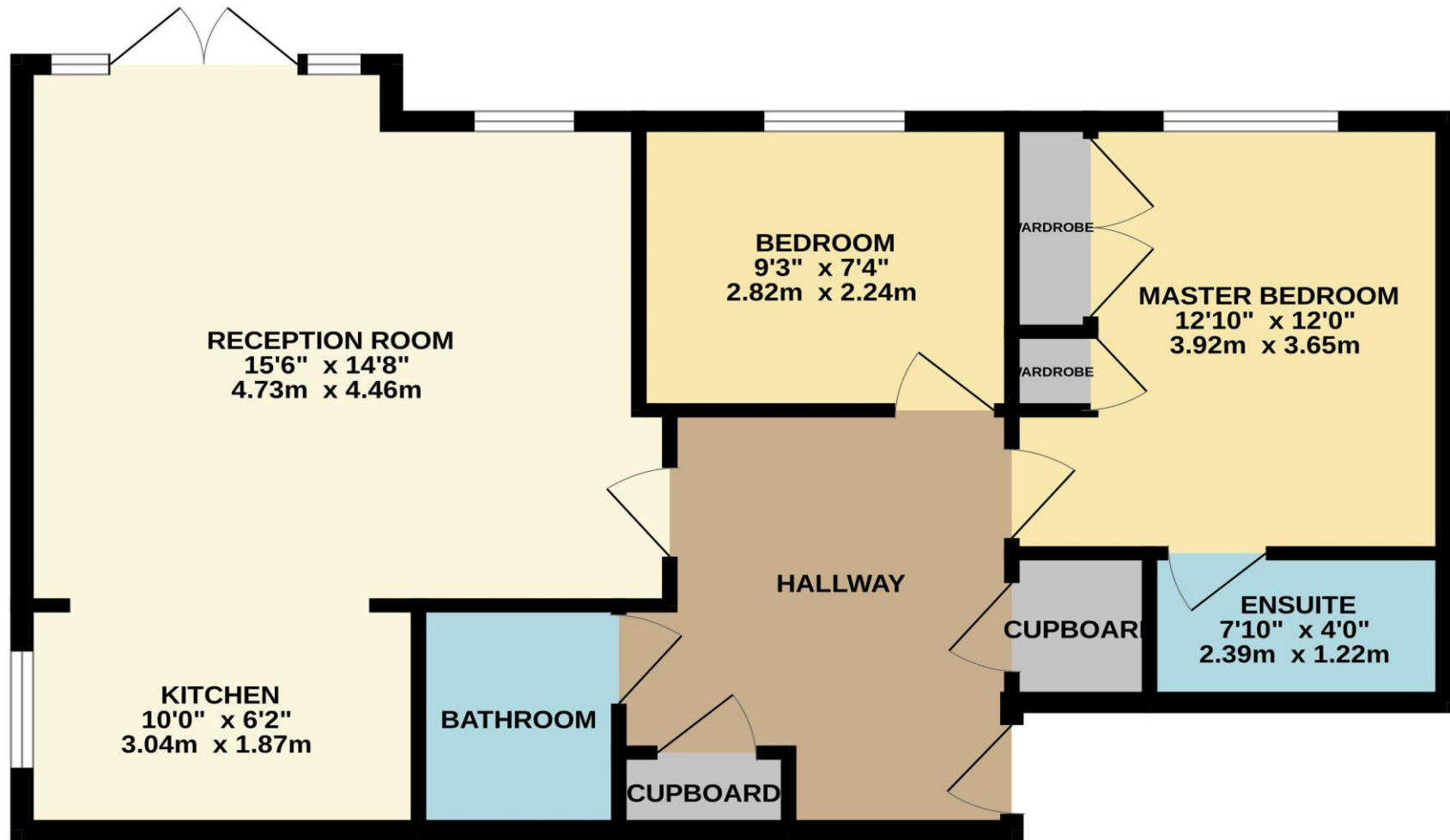




 paulwallace



GROUND FLOOR





Paul Wallace Estate Agents
Brookfield Centre
Cheshunt
Hertfordshire
EN8 0NN



01992 781100



cheshunt@paulwallace.co.uk



www.paulwallace.co.uk



Opening Times

Mon - Fri	9 am to 6:30 pm
Sat	9 am to 5:30 pm
Sun	Closed
Bank Hols	Closed



Agents note: Whilst every care has been taken to prepare these sales particulars, they are for guidance purposes only. All measurements are approximate and are for general guidance purposes only and whilst every care has been taken to ensure their accuracy, they should not be relied upon. Potential buyers are advised to recheck measurements.